

# INTRODUCING IMPROVISATION PIANO (HARMONIC STIMULUS)

## INITIAL GRADE



### Initial

Chord progressions - C Major

C G C C

*improvise for 4 bars*

C C G C

*improvise for 4 bars*

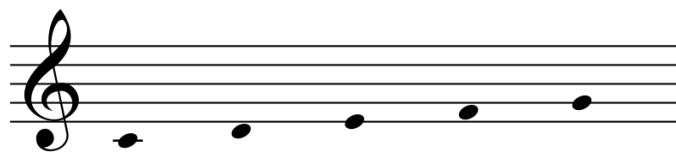
C G G C

*improvise for 4 bars*

#### Tips:

You may want to get your teacher, or a friend, to play the LH whilst you improvise in this five finger position - and then switch around!

Keep a steady pulse, and try to finish on the key note (C).



# Initial

Here are some worked examples:

A musical score for a 4/4 piece. The treble clef has a dynamic marking of *mf*. The bass clef has a dynamic marking of *mf*. The piece consists of four measures. Chords are indicated above the staff: C, G, C, C. The melody in the treble clef starts with a quarter note C, followed by a quarter rest, then a half note G. In the second measure, it has a quarter note G, a quarter note A, a quarter note B, and a half note C. In the third measure, it has a quarter note C, a quarter rest, and a half note G. In the fourth measure, it has a quarter note C, a quarter note A, a quarter note B, and a half note C. The bass clef accompaniment consists of a quarter note C in every measure, followed by a quarter rest.

*(inspired by the rhythm of 'Tickery Tockery' from Piano 2018-2020: Initial)*

A musical score for a 4/4 piece. The treble clef has a dynamic marking of *mf*. The bass clef has a dynamic marking of *mf*. The piece consists of four measures. Chords are indicated above the staff: C, C, G, C. The melody in the treble clef starts with a quarter note C, followed by a quarter rest, then a half note G. In the second measure, it has a quarter note C, a quarter note D, a quarter note E, and a half note G. In the third measure, it has a quarter note G, a quarter note A, a quarter note B, and a half note C. In the fourth measure, it has a quarter note C, a quarter rest, and a half note G. The bass clef accompaniment consists of a quarter note C in every measure, followed by a quarter rest.

A musical score for a 3/4 piece. The treble clef has a dynamic marking of *mp*. The bass clef has a dynamic marking of *mp*. The piece consists of four measures. Chords are indicated above the staff: C, G, G, C. The melody in the treble clef starts with a quarter note C, followed by a quarter rest, then a half note G. In the second measure, it has a quarter note G, a quarter note A, a quarter note B, and a half note C. In the third measure, it has a quarter note G, a quarter note A, a quarter note B, and a half note C. In the fourth measure, it has a quarter note C, a quarter rest, and a half note G. The bass clef accompaniment consists of a quarter note C in every measure, followed by a quarter rest.

**Tip:** Why not try rhythms from the pieces and exercises you are learning?

PUTTING PERFORMANCE FIRST

TRINITY  
COLLEGE LONDON

[trinitycollege.com/piano](http://trinitycollege.com/piano)