

ESOL Skills for Life

Entry 2 – Reading

Sample Paper 5

Time allowed: 60 minutes

- ▶ Write your name, candidate number, centre number and exam date on your answer sheet.
- ▶ You must not open this exam paper until instructed to do so.
- ▶ This exam paper has **three** tasks. Answer **all** questions.
- ▶ You may highlight parts of the texts or questions with a highlighter pen.
- ▶ Use only blue or black pen for your answers.
- ▶ Circle your answers **on the separate answer sheet**.

1. What is this text about?

- A books
- B television
- C cinemas



Question	Answer
1.	A <input checked="" type="radio"/> B <input type="radio"/> C
2.	A <input type="radio"/> B <input type="radio"/> C
3.	A <input type="radio"/> B <input type="radio"/> C

- ▶ You must not use pencil, erasable pen or correction fluid.
- ▶ You must not use a dictionary in this exam.
- ▶ You must not take this exam paper out of the exam room.

Task 1

Read the text and answer questions 1-9.

Hi Alfonso,

Thanks for your text. I had a great weekend. I went to Seaforth and I stayed with Lee.

I travelled on Saturday morning. I got to Seaforth at 11am. Lee couldn't meet me at the bus station but her flatmate, Ben, came. First we went to Lee's flat. It's very **spacious**. The rooms are really large.

Then Lee and I went to the beach and we had lunch in a café by the sea. It was sunny but we didn't sit outside. It was quite **chilly**. After lunch we went for a walk on the beach. We walked a long way and Lee walked fast. I felt very tired.

In the evening Lee cooked dinner and her friends Tim and Jun came to the flat. They were very **sociable**. We chatted about college and our studies. It was fun.

On Sunday morning, we left Lee's flat early and ate at a café. I got the train at 10 o'clock. I slept on the train.

See you soon

Love Yvette

Questions 1-3

Complete each sentence with the correct ending (A–E) from the box below. There is one ending you don't need and one example.

A went to the beach	C had dinner	E went on a train
B arrived in Seaforth	D met Lee's flatmate	

Example: On Saturday morning, Yvette *B*

1. First, she
2. Then, Yvette and Lee
3. Finally, they

Questions 4-6

Choose the word with the same meaning as the word **in bold**.

4. spacious

- A big
- B cheap
- C beautiful

5. chilly

- A hot
- B wet
- C cold

6. sociable

- A friendly
- B quiet
- C boring

Questions 7-9

Choose the correct answer.

7. Who met Yvette at the bus station?

- A Jun
- B Lee
- C Ben

8. Yvette thought the walk was

- A short
- B tiring
- C slow

9. Yvette had breakfast

- A at a café
- B at Lee's flat
- C on the train

Task 2

Sanjiv is going to do a course at Sitford College. Read the five texts and answer questions 10-18.

Text A

Name:
 College department:
 Course applied for:
 Email address:
 Mobile phone no:
 Signature: _____ Date: _____

Text B

From: Jill Brown

To: Sanjiv Patel

Dos and don'ts Where to go

Dear Sanjiv

Your computer course at Sitford College will start on 12 February. The course will be for two weeks and you have to attend the course from 9am to 5pm. Please report to Carlo Abano in the Computer Department office when you arrive. I attach some important information about what you must and must not do in the college and a plan of where to find the office in the building.

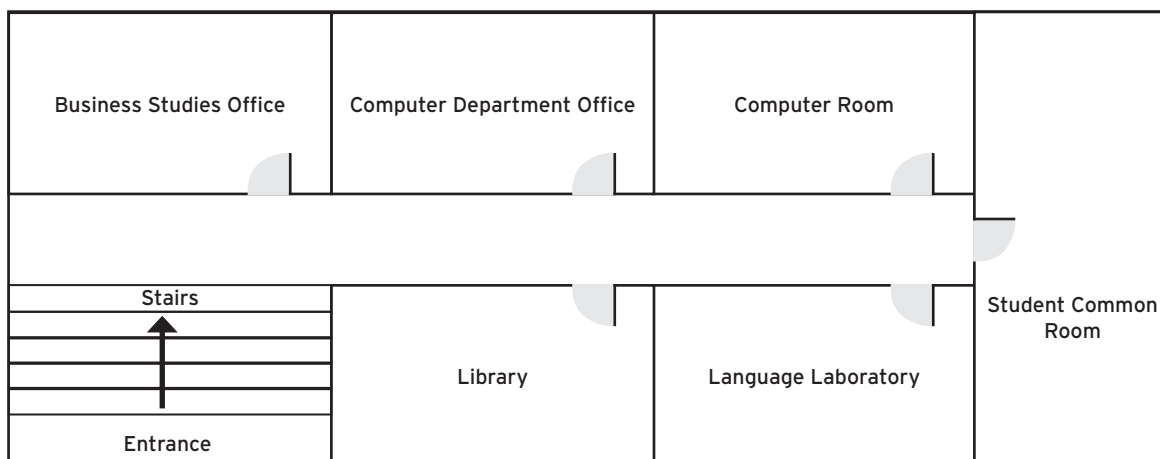
Regards

Jill Brown

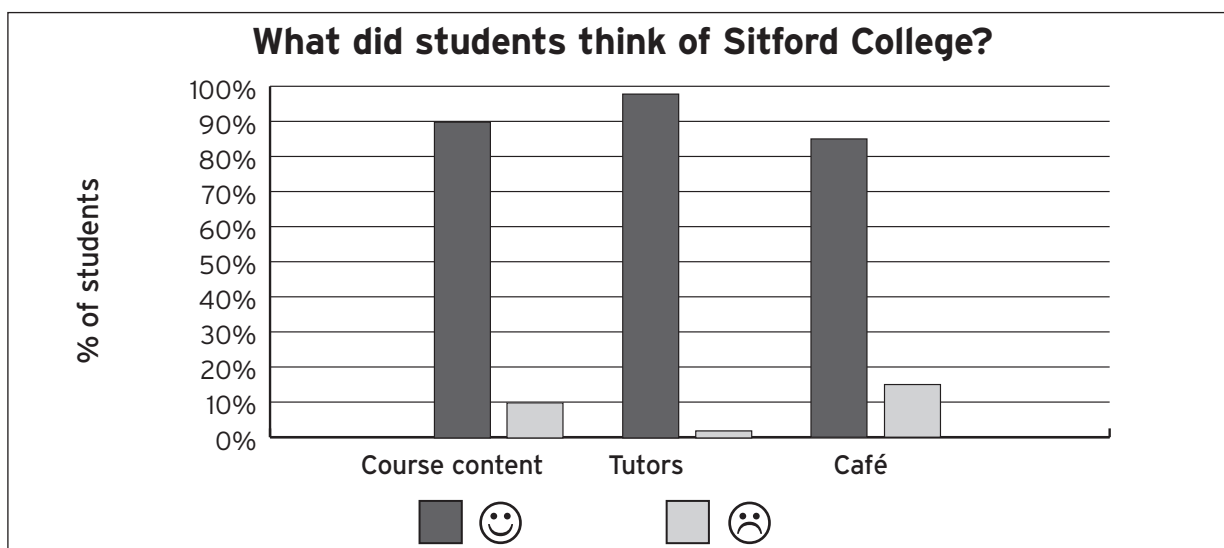
Text C

1. You must be on time for classes for the duration of the course.
2. **It is obligatory** to attend 90 per cent of the course.
3. You must take an exam at the end of your course.

Text D



Text E



Questions 10-12

Match the correct text (A-E) to the descriptions below. There is one text you don't need and one example.

Example: to apply for a course

 A

10. to tell someone about the rules of the course
 11. to say what people thought of past courses
 12. to give some information about place and time

Questions 13-18

Choose the correct answer.

13. In text A, Sanjiv has to
 A write his work telephone number
 B give the name of his company
 C give the name of the course
14. In text B, what does Jill Brown send with her email?
 A a floor plan of part of the college
 B a map of the college buildings
 C a street map of the area
15. In text C, **it is obligatory** means
 A you can choose to do something
 B it is better to do something
 C you have to do something
16. In text D, which room is next to the Computer Room?
 A the Library
 B the Language Laboratory
 C the Computer Department Office
17. Upstairs, the first door you come to is the door of
 A the Computer Room
 B the Business Studies Office
 C the Student Common Room
18. What did the students prefer?
 A the teachers
 B the food and drink
 C the course content

Turn over page

Task 3

Read the text and answer questions 19-24.

Did you know?
Fascinating fact file of the week

People spend one third of their lives asleep! A refreshing night's sleep is important for good health. However, people need different amounts of sleep at different times in their lives.

Babies spend most of their time asleep. They sleep for up to 16 hours a day. They grow a lot in their first year and sleep helps their brains develop. Children between 3 and 16 years old need 10 hours' sleep because they are growing and learning all the time too.

Adults usually have about 8 hours sleep each night. When they don't have enough sleep they find routine tasks more difficult. They can also get headaches or fall asleep during the day.

However, there are some extraordinary men and women who need very little sleep. Florence Nightingale, the famous nurse who lived in the 19th century, only had 4 hours sleep a night!

Questions 19-21

Choose the correct answer.

- 19.** This text is about
- A how much sleep people need
 - B why children and adults sleep
 - C the importance of good health
- 20.** How much sleep does a 5-year-old child need each day?
- A over 16 hours
 - B about 10 hours
 - C up to 3 hours
- 21.** Who only needs very little sleep?
- A famous people
 - B a few adults
 - C some men

Questions 22-24

Look at the list of words. Choose the correct answer.

22. Which word comes first in the list, before **bed**?

- A alarm
- B hours
- C morning

23. Where does **dream** come in the list?

- A between clock and health
- B between health and night
- C between night and pyjamas

24. Which word comes last in the list, after **pyjamas**?

- A sleep
- B dark
- C early

Sleeping

.....
bed.....

brain.....

clock.....
.....

health.....
.....

night.....
.....

pyjamas.....
.....

Remember to circle your answers on the answer sheet.

1. What is this text about?

- A books
- B television
- C cinemas



Question	Answer
1.	A <u>B</u> C
2.	A B C
3.	A B C

End of exam

Skills for Life Entry 2 Reading – Sample paper 5 Answers

1. D
2. A
3. C
4. A
5. C
6. A
7. C
8. B
9. A
10. C
11. E
12. B
13. C
14. A
15. C
16. C
17. B
18. A
19. A
20. B
21. B
22. A
23. A
24. A