

Flute Initial

Technical work and sight reading specimen tests for Trinity College London exams from 2017

Technical work

All sections to be prepared				
Scales & triads (from memory) – the examiner will select from the following:				
Scales: F and G major (first five notes only)	ascending and descending	min. ♩ = 60	tongued	<i>mf</i>
Triads: F and G major		min. ♩ = 120		

Scales

F major scale (first five notes only)

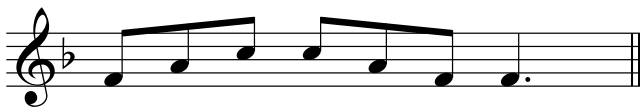


G major scale (first five notes only)



Triads

F major triad



G major triad



Sight reading specimen tests

1. **Moderato**

2. **Moderato**

3. **Moderato**