

# Bass Trombone

## Scales, Arpeggios & Exercises

---

for Trinity College London  
Bass Trombone exams from 2015

### Grades 6-8

Please note that a number of changes are being introduced to scales & arpeggios in the 2019-2022 syllabus. Revisions are summarised on the grade pages in this PDF but please refer to the syllabus for full details.

Published by  
Trinity College London Press Ltd  
trinitycollege.com

Registered in England  
Company no. 09726123

Copyright © 2014 Trinity College London  
Second impression (online edition), June 2018

**Unauthorised photocopying is illegal**  
No part of this publication may be copied or reproduced in any form or by any means without the prior permission of the publisher.

# Grade 6

Candidates to prepare i) Lip flexibility exercise and chromatic scale					
<b>Lip flexibility exercise</b> (from memory) Play the exercise slurred, using the slide combinations given. Chromatic scale starting on low E $\flat$ (two octaves, from memory) (tempo, dynamics and articulation as for scales below)					
Candidates to prepare in full <i>either</i> section ii) <i>or</i> section iii)					
<i>either</i> ii) <b>Scales &amp; arpeggios</b> (from memory) – the examiner will select from the following:					
Candidates should prepare scales and arpeggios from the following tonal centres: Low E $\flat$ major, low E $\flat$ minor D major, D minor	using plug range E $\flat$ , D	two octaves	$\text{♩} = 72-120$	tongued, legato-tongued or staccato-tongued as requested by the examiner	<i>f</i> or <i>p</i>
When the examiner requests a <b>major tonal centre</b> , the candidate should play in succession: The major scale The major arpeggio  When the examiner requests a <b>minor tonal centre</b> , the candidate should play in succession: The melodic minor scale The harmonic minor scale The minor arpeggio					
<b>or iii) Orchestral &amp; brass band extracts</b> See current syllabus for details					

2019-2022 syllabus changes:  
 Staccato-tongued articulation will no longer be required.

## i) Lip flexibility exercise and chromatic scale

$\text{♩} = 144$  play three times

slide 1

Repeat (descending) using the following slide positions:

3rd – 5th – 6th

Chromatic scale starting on E $\flat$  (two octaves)

Grade 6 continued

## ii) Scales & arpeggios

D major scale (two octaves)



D major arpeggio (two octaves)



D harmonic minor scale (two octaves)



D melodic minor scale (two octaves)



D minor arpeggio (two octaves)



Whole-tone scale starting on D (two octaves)



E $\flat$  major scale (two octaves)



**Grade 6 continued**

E $\flat$  major arpeggio (two octaves)



E $\flat$  harmonic minor scale (two octaves)



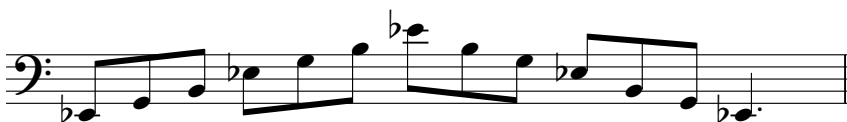
E $\flat$  melodic minor scale (two octaves)



E $\flat$  minor arpeggio (two octaves)



Augmented arpeggio starting on E $\flat$  (two octaves)



Diminished 7th starting on E $\flat$  (two octaves)



Dominant 7th in the key of A $\flat$  (two octaves)



# Grade 7

Candidates to prepare i) Lip flexibility exercise and chromatic scale						
<p><b>Lip flexibility exercise</b> (from memory)            Play the exercise slurred, using the slide positions given.            Chromatic scale starting on low C (two octaves, from memory) (tempo, dynamics and articulation as for scales below)</p>						
Candidates to prepare in full <i>either</i> section ii) <i>or</i> section iii)						
<i>either ii) Scales &amp; arpeggios</i> (from memory) – the examiner will select from the following:						
Candidates should prepare scales and arpeggios from the following tonal centres: Low C major, low C minor Low D $\flat$ major, low C $\sharp$ minor		using plug range C $\sharp$ , C	two octaves	$\text{♩} = 80-126$	tongued, legato-tongued or staccato- tongued as requested by the examiner	<i>f</i> or <i>mf</i> or <i>p</i> or <i>cresc./dim.</i> ( <i>p-f-p</i> ) or <i>dim./cresc.</i> ( <i>f-p-f</i> )
<p><b>Plus:</b>            Chromatic scale starting on low C<math>\sharp</math>            Whole-tone scale starting on low C and low C<math>\sharp</math>            Dominant 7th in the keys of F and F<math>\sharp</math>            Diminished 7th starting on low C and low C<math>\sharp</math>            Augmented arpeggio starting on low C and low C<math>\sharp</math></p>						
<p>When the examiner requests a <b>major tonal centre</b>, the candidate should play in succession:            The major scale            The major arpeggio</p> <p>When the examiner requests a <b>minor tonal centre</b>, the candidate should play in succession:            The melodic minor scale            The harmonic minor scale            The minor arpeggio</p>						
<p><i>or iii) Orchestral &amp; brass band extracts</i>            See current syllabus for details</p>						

## 2019-2022 syllabus changes:

*Cresc./dim.* and *dim./cresc.* dynamics and staccato-tongued articulation will no longer be required. The chromatic scale starting on low C $\sharp$  will no longer be required.

## i) Lip flexibility exercise and chromatic scale

$\text{♩} = 86$

slide 1

Repeat (descending) using the following slide combinations:

2nd – 3rd\* – 4th\*

\*Candidates may play an octave higher on these pedals

## Grade 7 continued

Chromatic scale starting on C (two octaves)

Chromatic scale starting on C (two octaves)

## ii) Scales & arpeggios

C major scale (two octaves)

C major scale (two octaves)

C major arpeggio (two octaves)

C major arpeggio (two octaves)

C harmonic minor scale (two octaves)

C harmonic minor scale (two octaves)

C melodic minor scale (two octaves)

C melodic minor scale (two octaves)

C minor arpeggio (two octaves)

C minor arpeggio (two octaves)

Grade 7 continued

Whole-tone scale starting on C (two octaves)



Augmented arpeggio starting on C (two octaves)



Diminished 7th starting on C (two octaves)



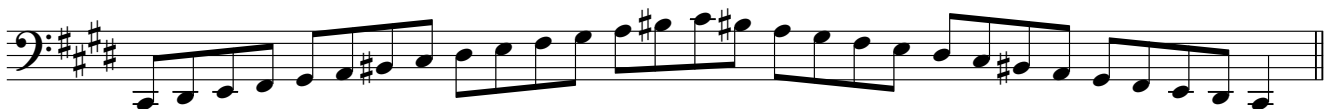
D $\flat$  major scale (two octaves)



D $\flat$  major arpeggio (two octaves)



C# harmonic minor scale (two octaves)



C# melodic minor scale (two octaves)







# Grade 8

## Candidates to prepare i) Lip flexibility exercise and chromatic scale

### Lip flexibility exercise (from memory)

Play the exercise slurred, using the slide positions given.

Chromatic scale starting on pedal B (two octaves, from memory) (tempo, dynamics and articulation as for scales below)

## Candidates to prepare in full either section ii) or section iii)

either ii) Scales & arpeggios (from memory) – the examiner will select from the following:

Candidates should prepare scales and arpeggios from the following tonal centres:

Low B major, low B minor  
Low B $\flat$  major, low B $\flat$  minor

### Plus:

Crabwise scale from F and pedal B $\flat$   
Chromatic scale starting on low B $\flat$  and low D  
Whole-tone scale starting on low B and low B $\flat$   
Dominant 7th in the keys of E and E $\flat$   
Diminished 7th starting on low B and low B $\flat$   
Augmented arpeggio starting on low B and low B $\flat$

using  
plug  
range B,  
ped B $\flat$

two  
octaves

$\text{♩} = 88-132$

tongued,  
slurred-  
tongued or  
staccato-  
tongued as  
requested by  
the examiner

*f* or *mf*  
or *p* or  
*cresc./dim.*  
(*p-f-p*)  
or  
*dim./cresc.*  
(*f-p-f*)

When the examiner requests a **major tonal centre**, the candidate should play in succession:

The major scale  
The major arpeggio

When the examiner requests a **minor tonal centre**, the candidate should play in succession:

The melodic minor scale  
The harmonic minor scale  
The minor arpeggio

### or iii) Orchestral & brass band extracts

See current syllabus for details

### 2019-2022 syllabus changes:

*Cresc./dim.* and *dim./cresc.* dynamics and staccato-tongued articulation will no longer be required. The chromatic scales starting on low B $\flat$  and D, and the crabwise scale from F will no longer be required. The crabwise scale from pedal B $\flat$  will need to be prepared tongued only.

## i) Lip flexibility exercise and chromatic scale

$\text{♩} = 72$

slide 1 (T1) (T1)

Repeat (descending) using the following slide combinations:

2nd – 3rd – 4th

Chromatic scale starting on pedal B (two octaves)

Grade 8 continued

## ii) Scales & arpeggios

Chromatic scale starting on D (two octaves)

Two staves of musical notation in bass clef. The first staff shows the ascending chromatic scale from D2 to D4, with notes: D, D#, E, E#, F, F#, G, G#, A, A#, B, B#, C, C#, D. The second staff shows the descending chromatic scale from D4 to D2, with notes: C#, C, B#, B, A#, A, G#, G, F#, F, E#, E, D#, D.

Dominant 7th in the key of E $\flat$  (two octaves)

One staff of musical notation in bass clef with two flats in the key signature. The scale consists of two octaves: E $\flat$ 2, F2, G2, A2, B $\flat$ 2, A2, G2, F2, E $\flat$ 2.

Dominant 7th in the key of E (two octaves)

One staff of musical notation in bass clef with three sharps in the key signature. The scale consists of two octaves: E2, F#2, G#2, A2, B2, A2, G#2, F#2, E2.

B $\flat$  major scale (two octaves)

One staff of musical notation in bass clef with two flats in the key signature. The scale consists of two octaves: B $\flat$ 2, C2, D2, E2, F2, G2, A2, B $\flat$ 2, B $\flat$ 2, A2, G2, F2, E2, D2, C2, B $\flat$ 2.

B $\flat$  major arpeggio (two octaves)

One staff of musical notation in bass clef with two flats in the key signature. The arpeggio consists of two octaves: B $\flat$ 2, D2, F2, B $\flat$ 2, B $\flat$ 2, D2, F2, B $\flat$ 2.



## Grade 8 continued

B major scale (two octaves)



B major arpeggio (two octaves)



B harmonic minor scale (two octaves)



B melodic minor scale (two octaves)



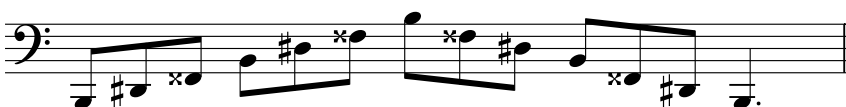
B minor arpeggio (two octaves)



Whole-tone scale starting on B (two octaves)



Augmented arpeggio starting on B (two octaves)



Diminished 7th starting on B (two octaves)



Grade 8 continued

Crabwise scale from F (two octaves – tongued or slurred as indicated)

Musical notation for a crabwise scale starting on F, two octaves, in 4/4 time. The scale is written in bass clef and consists of four lines of music. Each line contains four measures of eighth notes, with slurs and accents indicating phrasing. The notes are: Line 1: F2, G2, A2, Bb2, C3, D3, E3, F3; Line 2: G3, A3, B3, C4, D4, E4, F4, G4; Line 3: A4, B4, C5, D5, E5, F5, G5, A5; Line 4: B5, C6, D6, E6, F6, G6, A6, B6. The final measure of the fourth line is a whole rest.

Crabwise scale from pedal Bb (two octaves – tongued or slurred as indicated)

Musical notation for a crabwise scale starting on pedal Bb, two octaves, in 4/4 time. The scale is written in bass clef and consists of four lines of music. Each line contains four measures of eighth notes, with slurs and accents indicating phrasing. The notes are: Line 1: Bb1, C2, D2, Eb2, F2, G2, A2, Bb2; Line 2: C2, D2, Eb2, F2, G2, A2, Bb2, C3; Line 3: D3, Eb3, F3, G3, Ab3, Bb3, C4, D4; Line 4: Eb4, F4, G4, Ab4, Bb4, C5, D5, Eb5. The final measure of the fourth line is a whole rest.