

# Tuba in B $\flat$

## Scales & Arpeggios

for Trinity College London  
Bass Clef B $\flat$  Tuba exams  
2013-2014

**Grades 1-8**

# Grade 1

Candidate to prepare in full *either* Section i) *or* Section ii):

*either* i) Scales and Arpeggios (from memory):

The following scales and arpeggios to be performed *mf* and tongued (♩ = 46-60):

Bb major scale (one octave)



Bb major arpeggio (one octave)



G natural minor scale (one octave)



Alternatively, candidates may play the harmonic *or* melodic form of the minor, as follows:

G harmonic minor scale (one octave)

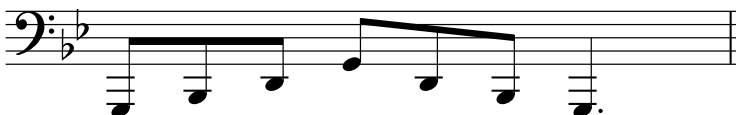


*or*

G melodic minor scale (one octave)



G minor arpeggio (one octave)



*or* ii) Exercises:

Candidates to prepare the following:

Lawrence 1b. Getting Started

Lawrence 3b. A Low Trick

Lawrence 4b. Limbering Down

Exercises for treble clef players (Bb) are contained in the book *Graded Exercises and Studies for Trumpet and Other Valved Brass Instruments* published by Faber Music 0-571-53727-8. Exercises for bass clef players are contained in *Selected Exercises and Studies for Tuba (Eb)* available to download by grade from [www.trinitycollege.co.uk/digital](http://www.trinitycollege.co.uk/digital)

## Grade 2

Candidate to prepare in full *either* Section i) *or* Section ii):

*either* i) Scales and Arpeggios (from memory):

The following scales and arpeggios to be performed *mf*, tongued or slurred as requested by the examiner ( $\text{♩} = 50-66$ ):

C major scale (one octave)



C major arpeggio (one octave)



G harmonic minor scale (one octave)



Alternatively, candidates may play the natural or melodic form of the minor, as follows:

G natural minor scale (one octave)



or

G melodic minor scale (one octave)



G minor arpeggio (one octave)



A $\flat$  major scale (one octave)



A $\flat$  major arpeggio (one octave)



## Grade 2 continued

or ii) Exercises:

Candidates to prepare the following:

Lawrence 5. Lip Push-Ups!

Lawrence 13. The One-Meter Sloth Race

Lawrence 15. Out of the Box

Exercises for treble clef players (B♭) are contained in the book *Graded Exercises and Studies for Trumpet and Other Valved Brass Instruments* published by Faber Music 0-571-53727-8.

Exercises for bass clef players are contained in *Selected Exercises and Studies for Tuba (E♭)* available to download by grade from [www.trinitycollege.co.uk/digital](http://www.trinitycollege.co.uk/digital)

# Grade 3

Candidate to prepare in full *either* Section i) *or* Section ii):

*either* i) Scales and Arpeggios (from memory):

The following scales and arpeggios to be performed *mf*, tongued *or* slurred as requested by the examiner ( $\text{♩} = 54-72$ ):

B $\flat$  harmonic minor scale (one octave)



or

B $\flat$  melodic minor scale (one octave)



B $\flat$  minor arpeggio (one octave)



Whole-tone scale starting on B $\flat$  (one octave)



D $\flat$  major scale (one octave)



D $\flat$  major arpeggio (one octave)



D major scale (one octave)



**Grade 3 continued**

**D major arpeggio (one octave)**



**D harmonic minor scale (one octave)**

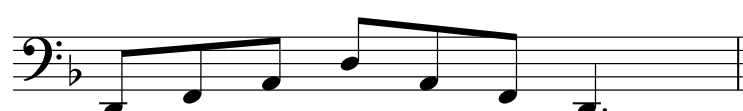


or

**D melodic minor scale (one octave)**



**D minor arpeggio (one octave)**



**or ii) Exercises:**

Candidates to prepare the following:

Lawrence 14. The Drunken Sailor Sobers Up!

Lawrence 16. Snakes and Ladders

Lawrence 20. Chops Factor I

Exercises for treble clef players (B $\flat$ ) are contained in the book *Graded Exercises and Studies for Trumpet and Other Valved Brass Instruments* published by Faber Music 0-571-53727-8.

Exercises for bass clef players are contained in *Selected Exercises and Studies for Tuba (E $\flat$ )* available to download by grade from [www.trinitycollege.co.uk/digital](http://www.trinitycollege.co.uk/digital)

# Grade 4

Candidate to prepare in full *either* Section i) *or* Section ii):

*either* i) Scales and Arpeggios (from memory):

The following scales and arpeggios to be performed *mf*, tongued *or* slurred as requested by the examiner ( $\text{♩} = 60-104$ ):

Chromatic scale starting on B $\flat$  (one octave)



C harmonic minor scale (one octave)



or

C melodic minor scale (one octave)



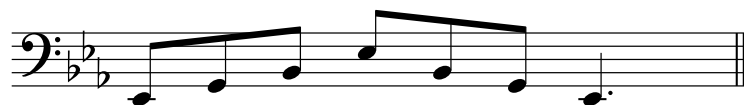
C minor arpeggio (one octave)



E $\flat$  major scale (one octave)



E $\flat$  major arpeggio (one octave)



**Grade 4 continued**

E $\flat$  harmonic minor scale (one octave)



or

E $\flat$  melodic minor scale (one octave)



E $\flat$  minor arpeggio (one octave)



Whole-tone scale starting on E $\flat$  (one octave)



A $\flat$  major scale (to 12th)



A $\flat$  major arpeggio (to 12th)



or ii) Exercises:

Candidates to prepare the following:

- Lawrence 17a. Cool Marché
- Lawrence 21. Chops Factor II
- Lawrence 30. As Fast as You Can

Exercises for treble clef players (B $\flat$ ) are contained in the book *Graded Exercises and Studies for Trumpet and Other Valved Brass Instruments* published by Faber Music 0-571-53727-8.

Exercises for bass clef players are contained in *Selected Exercises and Studies for Tuba (E $\flat$ )* available to download by grade from [www.trinitycollege.co.uk/digital](http://www.trinitycollege.co.uk/digital)



# Grade 5

Candidate to prepare in full *either* Section i) *or* Section ii):

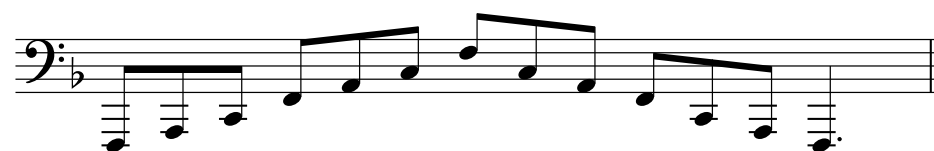
*either* i) Scales and Arpeggios (from memory):

The following scales and arpeggios to be performed *mf*, tongued *or* slurred as requested by the examiner (♩ = 66-112):

F major scale (two octaves)



F major arpeggio (two octaves)



F harmonic minor scale (two octaves)



or

F melodic minor scale (two octaves)



F minor arpeggio (two octaves)



Chromatic scale starting on F (two octaves)





# Grade 6

Candidate to prepare in full *either* Section i) *or* Section ii):

*either* i) Scales and Arpeggios (from memory):

The following scales and arpeggios to be performed *f* or *p*, tongued or legato tongued as requested by the examiner  
(♩ = 72-120):

E major scale (two octaves)



E major arpeggio (two octaves)



E harmonic minor scale (two octaves)



E melodic minor scale (two octaves)



E minor arpeggio (two octaves)



G major scale (two octaves)



G major arpeggio (two octaves)



**Grade 6 continued**

G harmonic minor scale (two octaves)



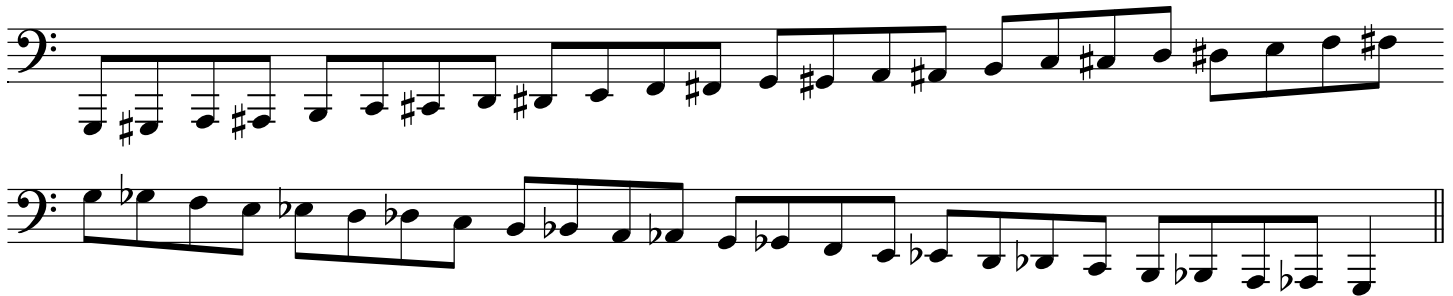
G melodic minor scale (two octaves)



G minor arpeggio (two octaves)



Chromatic scale starting on G (two octaves)



Whole-tone scale starting on G (two octaves)



Augmented arpeggio starting on G (two octaves)



\*If preferred, the dominant 7th may be finished on the starting note rather than resolving onto the tonic.

**Grade 6 continued**

Dominant 7th in the key of G (one octave)\*



Diminished 7th starting on G (two octaves)



or ii) Exercises:

Candidates to prepare the following:

Lawrence 35. Triple Digit Accidental Twister

Lawrence 39. Summing Up (Again)

Lawrence 40b. Short 'n' Sharp

Exercises for treble clef players (B♭) are contained in the book *Graded Exercises and Studies for Trumpet and Other Valved Brass Instruments* published by Faber Music 0-571-53727-8.

Exercises for bass clef players are contained in *Selected Exercises and Studies for Tuba (E♭)* available to download by grade from [www.trinitycollege.co.uk/digital](http://www.trinitycollege.co.uk/digital)

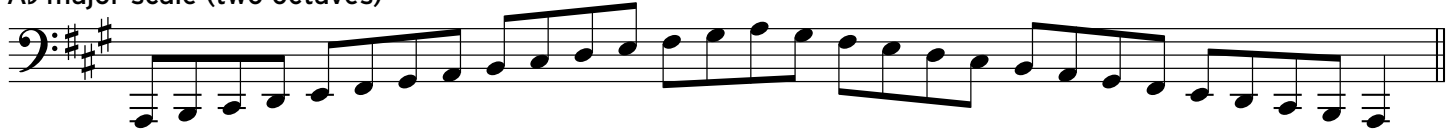
# Grade 7

Candidate to prepare in full *either* Section i) *or* Section ii):

*either* i) Scales and Arpeggios (from memory):

The following scales and arpeggios to be performed *f* or *p*, tongued or slurred or staccato tongued as requested by the examiner (♩ = 80-126):

Ab major scale (two octaves)



Ab major arpeggio (two octaves)



Ab harmonic minor scale (two octaves)



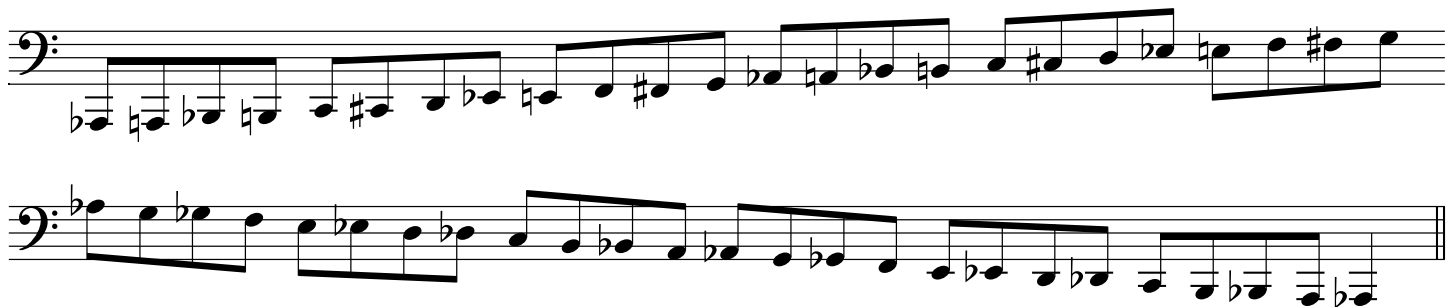
Ab melodic minor scale (two octaves)



Ab minor arpeggio (two octaves)



Chromatic scale starting on Ab (two octaves)



Whole-tone scale starting on Ab (two octaves)



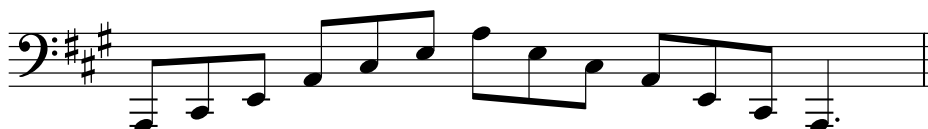
## Grade 7 continued

Augmented arpeggio starting on A $\flat$  (two octaves)Dominant 7th in the key of A $\flat$  (one octave)\*Diminished 7th starting on G $\sharp$ /A $\flat$  (two octaves)

A major scale (two octaves)



A major arpeggio (two octaves)



A harmonic minor scale (two octaves)



A melodic minor scale (two octaves)



A minor arpeggio (two octaves)



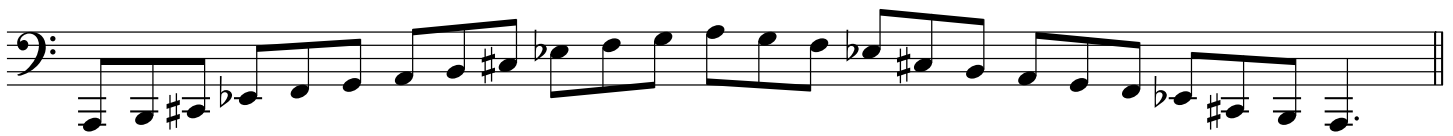
\*If preferred, the dominant 7th may be finished on the starting note rather than resolving onto the tonic.

**Grade 7 continued**

Chromatic scale starting on A (two octaves)



Whole-tone scale starting on A (two octaves)



Augmented arpeggio starting on A (two octaves)



Dominant 7th in the key of A (one octave)\*



Diminished 7th starting on A (two octaves)



or ii) Exercises:

Candidates to prepare the following:

- Lawrence 23. Chops Factor IV
- Lawrence 49. The Twister!
- Lawrence 57. Back Finger Study

Exercises for treble clef players (Bb) are contained in the book *Graded Exercises and Studies for Trumpet and Other Valved Brass Instruments* published by Faber Music 0-571-53727-8.

Exercises for bass clef players are contained in *Selected Exercises and Studies for Tuba (Eb)* available to download by grade from [www.trinitycollege.co.uk/digital](http://www.trinitycollege.co.uk/digital)

\*If preferred, the dominant 7th may be finished on the starting note rather than resolving onto the tonic.



# Grade 8

Candidate to prepare in full *either* Section i) *or* Section ii):

*either* i) Scales and Arpeggios (from memory):

The following scales and arpeggios to be performed *f* or *p*, tongued or slurred or staccato tongued or slurred in pairs (scales only), as requested by the examiner ( $\text{♩} = 88-132$ ):

B $\flat$  major scale (two octaves)



B $\flat$  major arpeggio (two octaves)



B $\flat$  harmonic minor scale (two octaves)



B $\flat$  melodic minor scale (two octaves)



B $\flat$  minor arpeggio (two octaves)



Chromatic scale starting on B $\flat$  (two octaves)



Whole-tone scale starting on B $\flat$  (two octaves)

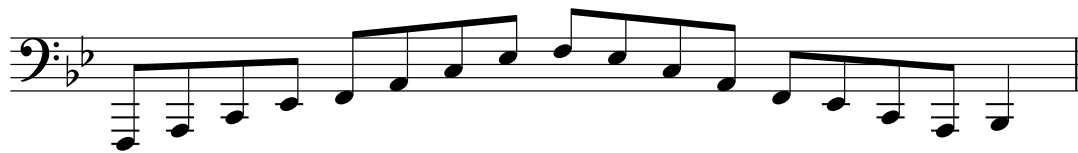


Grade 8 continued

Augmented arpeggio starting on Bb (two octaves)



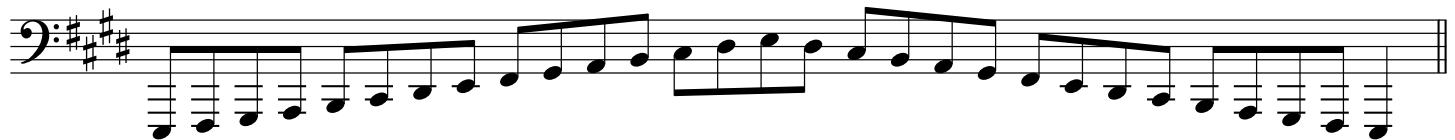
Dominant 7th in the key of Bb (two octaves)\*



Diminished 7th starting on Bb (two octaves)



E major scale (two octaves)



E major arpeggio (two octaves)



E harmonic minor scale (two octaves)



E melodic minor scale (two octaves)



E minor arpeggio (two octaves)



\*If preferred, the dominant 7th may be finished on the starting note rather than resolving onto the tonic.

## Grade 8 continued

Chromatic scale starting on E (two octaves)

Whole-tone scale starting on E (two octaves)

Augmented arpeggio starting on E (two octaves)

Dominant 7th in the key of E (one octave)\*

Diminished 7th starting on E (two octaves)

F# major scale (two octaves)

F# major arpeggio (two octaves)

\*If preferred, the dominant 7th may be finished on the starting note rather than resolving onto the tonic.



## Grade 8 continued

Crabwise scale from B $\flat$  (two octaves - tongued or slurred as indicated)

Crabwise scale from F (two octaves - tongued or slurred as indicated)

## or ii) Exercises:

Candidates to prepare the following:

- Lawrence 61. Legato finale
- Lawrence 62. Fingers Finale
- Lawrence 63. Staccatissimo Finale

Exercises for treble clef players (B $\flat$ ) are contained in the book *Graded Exercises and Studies for Trumpet and Other Valved Brass Instruments* published by Faber Music 0-571-53727-8.

Exercises for bass clef players are contained in *Selected Exercises and Studies for Tuba (E $\flat$ )* available to download by grade from [www.trinitycollege.co.uk/digital](http://www.trinitycollege.co.uk/digital)